

# HOMERLY CASA

Action Area III  
Newtown  
Kolkata - 700156



+91 90395 46540

info@homerly.in





*"Homes You Deserve"*



# HOMERLY CASA

## Homes You Deserve

Modern and smart elavations.

luxurious 1,2 &3 bhk Flats.

Spacious bed rooms,  
living Dining area  
with kitchen.

Toilets with quality fixtures.

Balcony with clear exterior view.

*"Homes You Need"*



# HOMERLY CASA

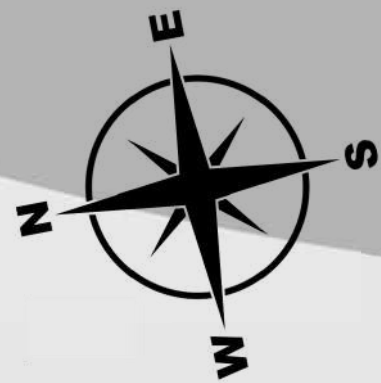
## GROUND FLOOR PLAN





TYPICAL  
FLOOR  
PLAN

SL. No.	FLAT MKD.	AREA
1	FLAT-A (3 BHK)	1200 Sq. ft.
2	FLAT-B (CLUB 1 BHK)	500 Sq. ft.
3	FLAT-C (CLUB 1 BHK)	500 Sq. ft.
4	SHOP	387 Sq. ft.
5	CAR PARKING	165 Sq. ft.





HOMERLY  
CASA

FLAT-A  
(3BHK)





FLAT-B & C  
(1BHK)



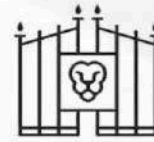
FLAT - B



FLAT - C

**“Start Unknown.....  
.....Finish Unforgettable ! ”**

Wide Entrance Gate and Passage



Pure Water Supply



Day and Night Security



CCTV Camera



Two and Four Wheeler Parking



Elevator / Lift



AMENITIES



## SPECIFICATIONS

### **Structure**

R.C.C. frame structure.

### **Elevation**

A unique blend of modern architecture.

### **Exterior**

Weatherproof paint and other decorations

### **Interior Finish**

Conventional brickwork with Wall Putty finish.

### **Flooring**

Vitrified tiles in living, dining & bedrooms and Anti-Skid tiles in Kitchen and Bathrooms. Wide staircase with good quality marble flooring.

### **Kitchen**

Granite Top platforms with 1 stainless steel sink and glazed tiles upto 3 ft. Height above the platform.

### **Door**

Teak finish Flush door at main entrance with flush doors in all other rooms.

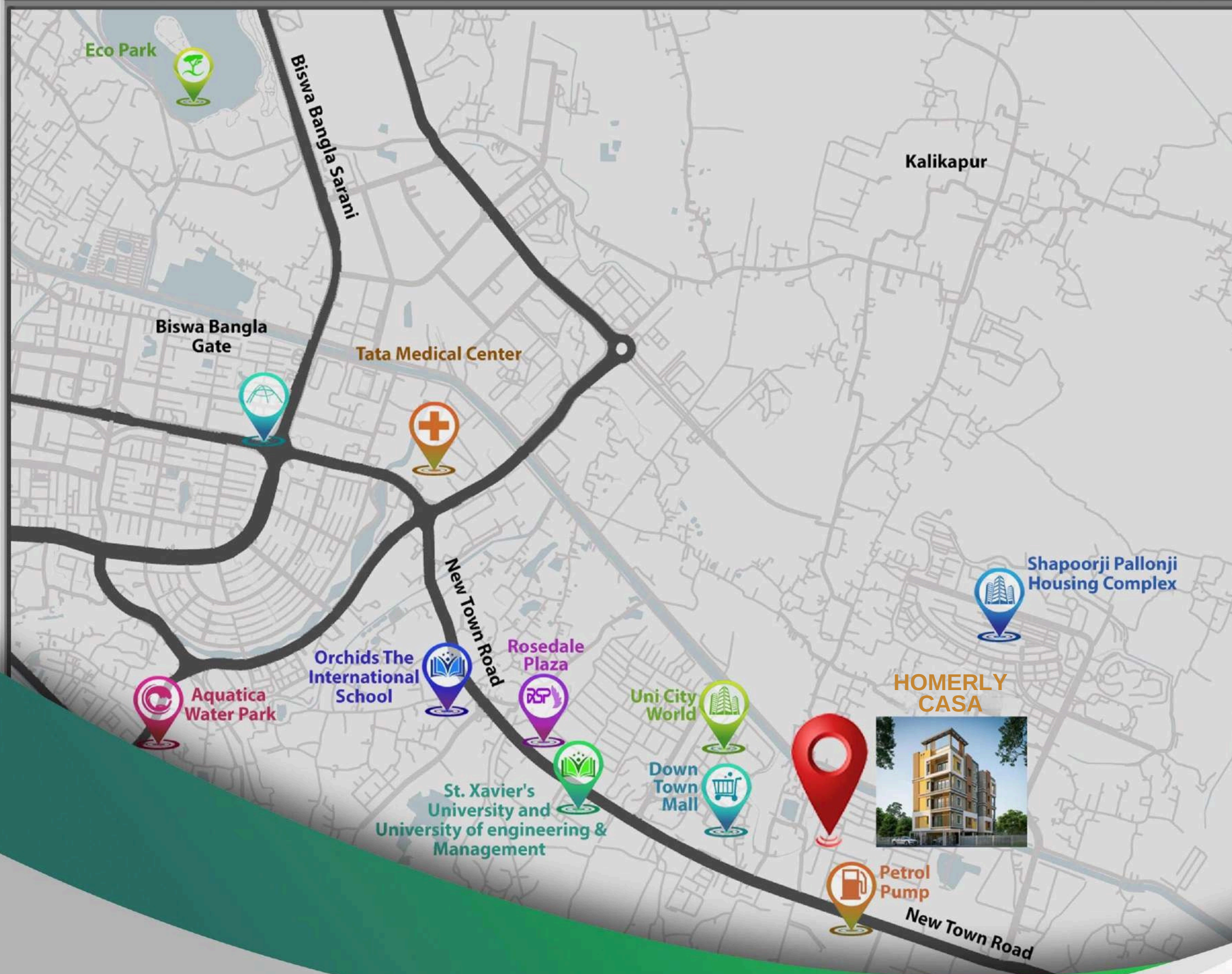
### **Window**

Aluminium z-section window.

### **Electricals**

Copper wiring in concealed conduits, AC point in master bedroom. Geyser Point in Main Toilet & sufficient light and fan points, modular switches of reputed make.





Biswa Bangla Gate		6.3 km
Tata Medical Center		4.1 km
Orchids The International School		2.9 km
St. Xavier's University		2.0 km
Aquatica Water Park		7.0 km
Shapoorji Pallonji Housing Complex		2.8 km
Eco Park		6.2 km
Uni World City		2.2 km
Down Town Mall		2.3 km
Rose Dale Plaza		1.9 km
University of engineering & Management (UEM)		1.6 km
Petrol Pump ( Indian Oil)		1.5 km

### Project Address-

Plot no. AA-III C/1112 , Category HIGH-II,  
Action Area-IIIC, under P.S Newtown,  
District- North 24 Parganas Pin- 700160. (Near-Rosedale)

LOCATION  
MAP

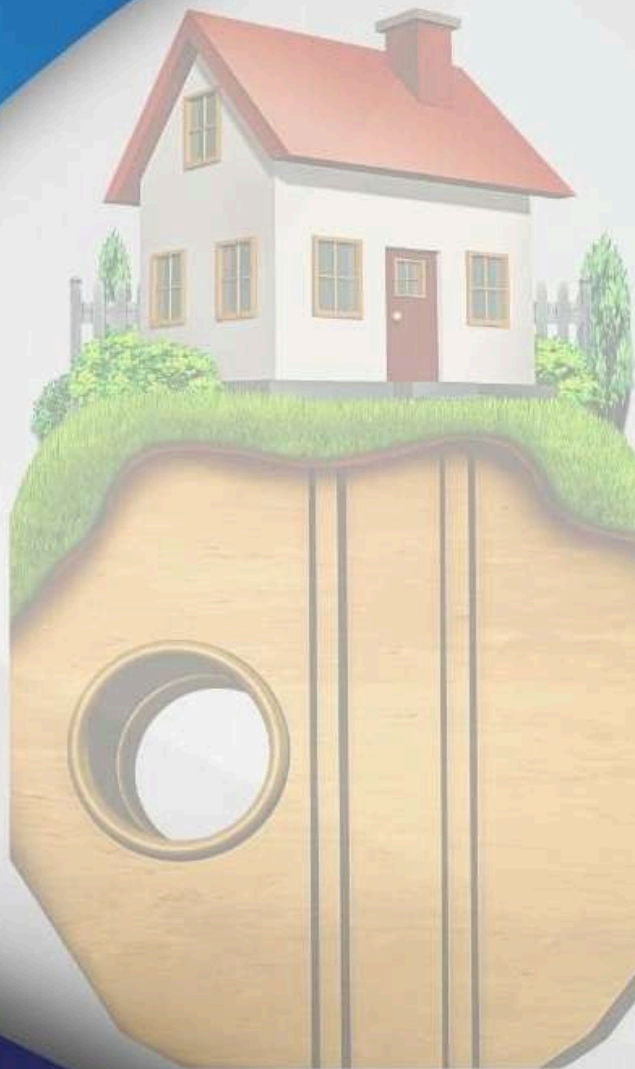


## About Homerly Realcon

With nationwide real estate experience, complete with streamlined planning and quality craftsmanship, we aim to build a dream home for every citizen of this country.

Homerly Realcon is a conglomerate of the real estate industry in India with prestigious flats/complexes and unique design bungalows to its credit. Currently, its presence is around Kolkata. With the changing times, Homerly Realcon has now explored new ideas and technology.

Homerly Realcon is your destination where you can live happily with your family.







**Homerly Realcon** is a growing real estate organization in eastern India, providing uniquely designed residential apartments/flats and commercial spaces at affordable prices.

Site Address. : St. No - 826, AA-IIIC, Newtown,  
P.S. - Techno City, Kolkata, North 24 Parganas,  
West Bengal - 700156.



**Contact No. +91 90395 46540**

Office Address. : 32, Chowringhee Road, OM Tower, 7th  
Floor, Unit No- 706, PARK Street, Kolkata, WB-700071



[www.homerly.in](http://www.homerly.in)



[info@homerly.in](mailto:info@homerly.in)

Follow Us -



Designed by :



Homerly Realcon Private Limited